

Scoping the expansion of the SCIROCCO model to self-assess the maturity of health system functions: from digital integrated care to open innovation and social development

Henderson D¹, Lange M², Marti T², Pavlickova A¹, Whitehouse D²

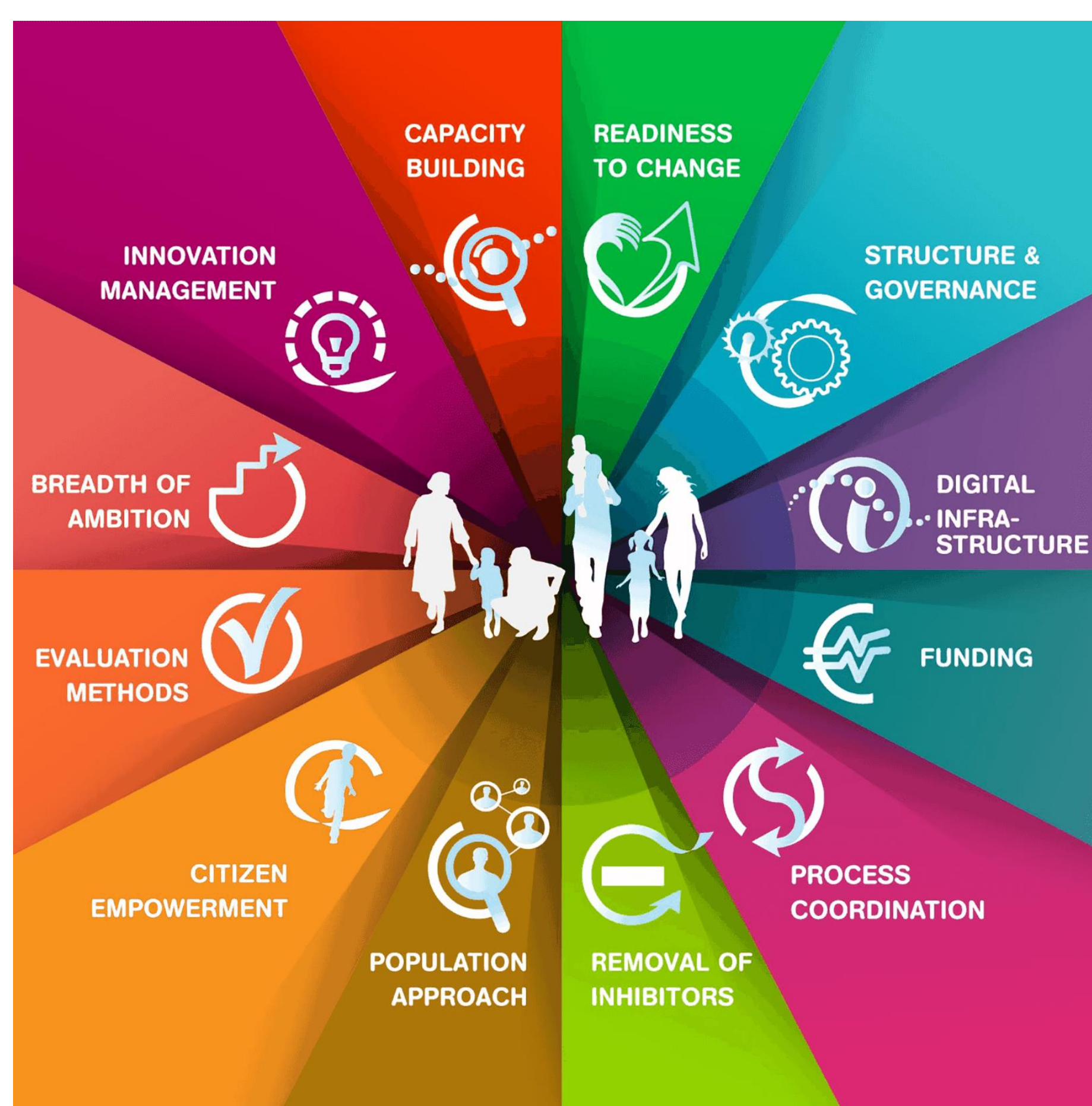
Background

The SCIROCCO Exchange project builds upon the preliminary achievements of the B3 Action Group on Integrated Care (of the European Innovation Partnership on Active and Healthy Ageing) that first developed the concept of the B3 Maturity Model. Through the activities of the EU Health Programme funded project SCIROCCO, the Model has been further refined and tested and is supported by a validated online self-assessment tool for integrated care.

Goal

Scope the expansion of the SCIROCCO model and tool towards new applications involving new users and addressing new topics.

SCIROCCO Exchange Maturity Model for Integrated Care



Results

Four types of expansion have been identified: (1) user expansion; (2) drill-down expansion; (3) full-blown expansion; and (4) topic expansion. They are described and illustrated throughout four applications.

Long-term care policy development

USER EXPANSION

Policymakers in Estonia have adopted the SCIROCCO model to develop long-term care policies.

The Ministry of Health in Estonia started a structural reform process to improve health and care integration for people with complex chronic health and social conditions.



Estonian health authorities deemed the SCIROCCO model fit-for-purpose to assess five areas and derive insights for developing new policies to improve long-term care.

Digital maturity for integrated care

DRILL-DOWN EXPANSION

This modality of expansion consist of drilling-down one of the 12 dimensions that structure the original maturity model for integrated care.

By drilling-down one dimension, it is possible to gain further insights on the strengths and gaps when measuring readiness and maturity for improving integrated health and care.

In the more than 60 implementations of the SCIROCCO Exchange Maturity Model, digital infrastructure has been identified as a key dimension to advance health and care integration. This result suggests that delving into digital readiness can be beneficial to understand better the opportunities and obstacles to improve integrated care.

Digital maturity can be further analysed by exploring the level of availability and use of Electronic Health Records, health information exchanges, patients' data access or advance health analytics like population health dashboards.

FULL-BLOWN EXPANSION

Digital Neighbourhoods Maturity Model

Model expansion to a completely different and non-health-related topic (development of digital neighbourhoods) with a different type of users (cross-sectoral local agents).

The Project "Technik im Quartier" (Technology in the neighbourhood) led by Furtwangen University aims to investigate how neighbourhood development concepts and technical assistance systems can mutually benefit from an integrated approach.

A full-blown expansion of the SCIROCCO Exchange Maturity Model was carried out to address the assessment needs of the project. The expansion process kept the structure of 12 dimensions and maturity scales and only adapted the description of dimensions and narratives to the assessment context.

TOPIC EXPANSION

Open innovation in digital health and care

Out of the integrated care comfort zone, this expansion has addressed open innovation in digital health and care.

Accelerating SME innovation with a living lab approach is the overarching goal of the ACSELL project.

One of the domains for open innovation is digital health and care innovation. ACSELL has applied the SCIROCCO Model and Tool adapted to the local open innovation context, proving the level of adaptability to topics different from integrated care.



Automatically generated radar diagrams enable internal discussions and external comparison

KEY FEATURES

SCIROCCO Model

- Structured in 12 dimensions with 6-level maturity assessment scales
- Adopts a multistakeholder and a consensus-building approach
- Identifies strengths and capability gaps
- Helps to co-create implementation plans

SCIROCCO Tool

- Multiuser web-based application
- Develops radar diagrams
- Translated into 8 different languages

WHAT HAVE WE LEARNT THROUGHOUT OUR EXPANSION EXPERIENCES?

- FLEXIBLE AND ADAPTABLE:** the SCIROCCO Exchange Model and Tool has been successfully proofed and adapted to different topics and type of users.
- EASY-TO-USE AND PRACTICAL:** adopters declare that SCIROCCO has helped them to quickly assess the maturity level in a comprehensive way and involving multiple agents.

¹ The Scottish Government, Digital Health and Care Scotland

² EHTEL - European Health Telematics Association



Do you want to adopt or adapt the SCIROCCO Exchange Maturity Model to your context or project?

Contact us:
andrea.pavlickova@nhs.scot

www.sciroccoexchange.com