

# PHYSICIAN COLLABS

THE EFFECT OF THEME-BASED RESTRUCTURING OF A HOSPITAL ON  
COLLABORATION BETWEEN PHYSICIANS

---

Anoek Braam

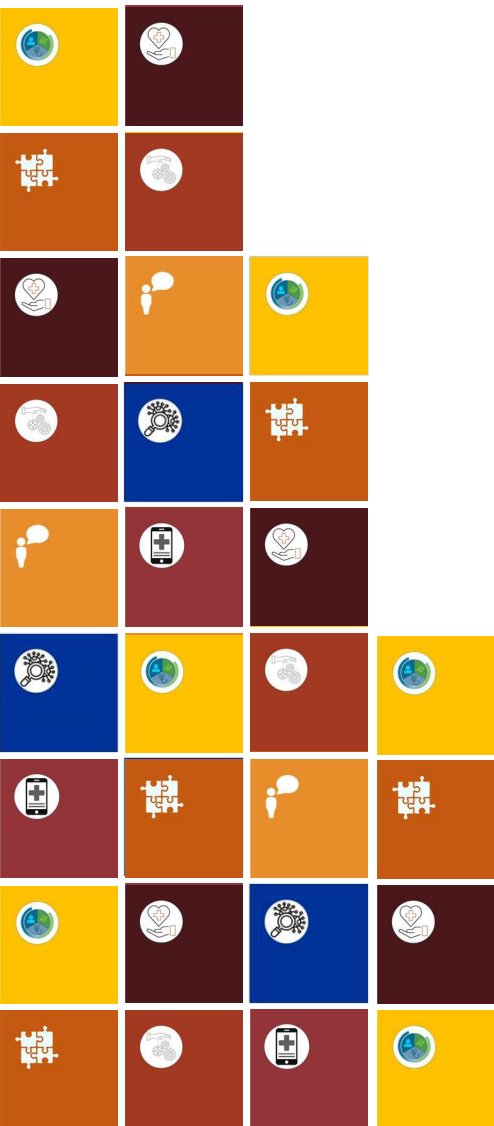
MSc

[braam@eshpm.eur.nl](mailto:braam@eshpm.eur.nl)

Erasmus School of  
Health Policy  
& Management

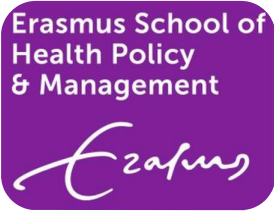
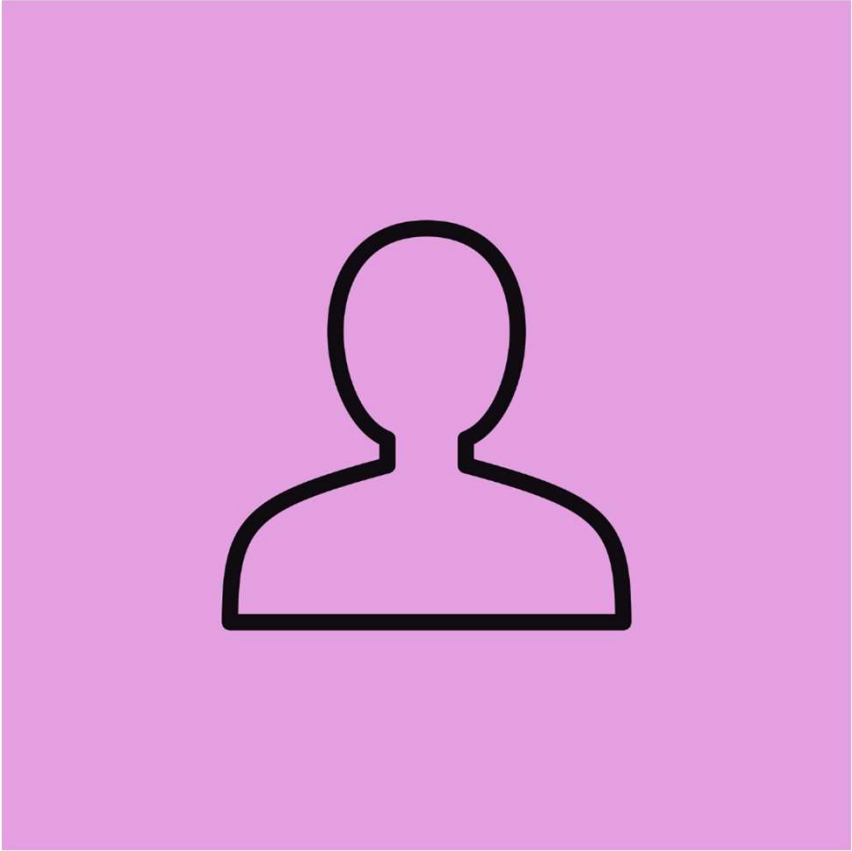


#EHMA2020





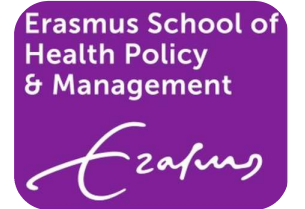
# Introduction



#EHMA2020



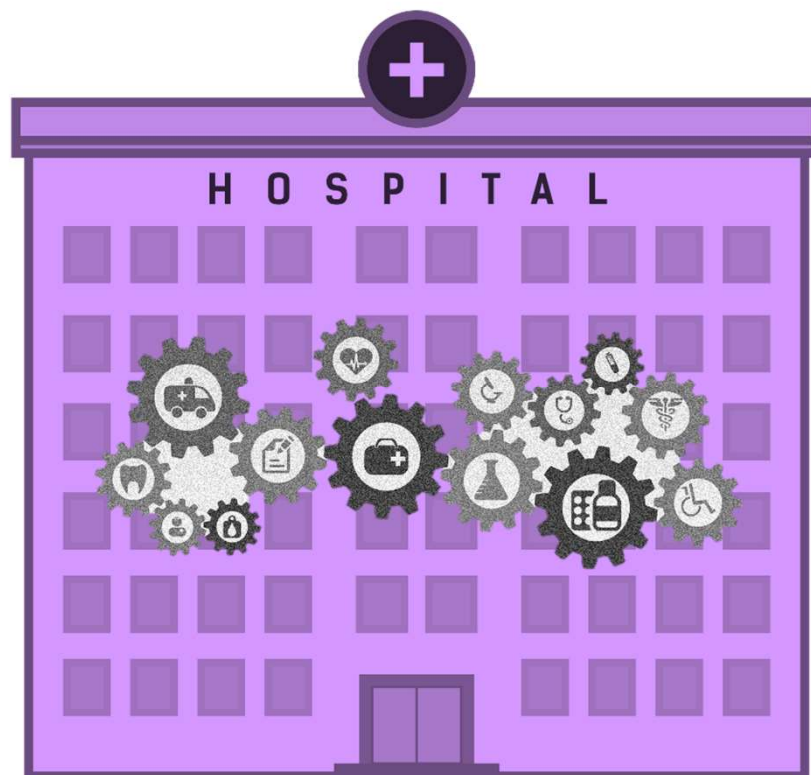
# Hospitals Change



#EHMA2020



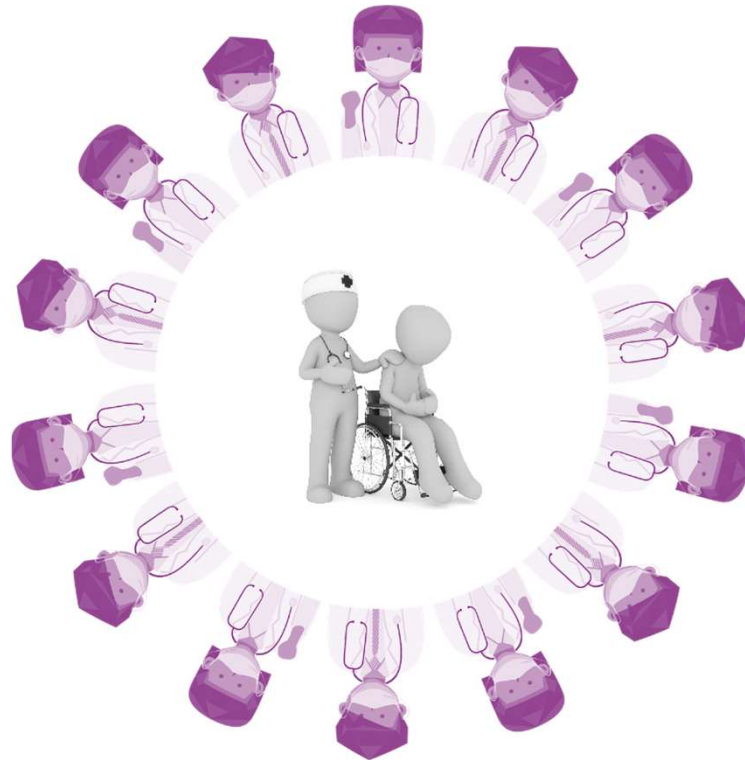
# Practical Embedding/Theoretical Background



#EHMA2020



# Physician Collaboration



#EHMA2020



# Data



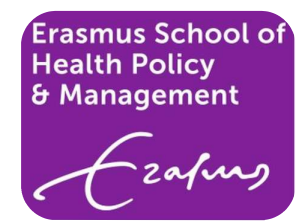
#EHMA2020



# Data Collection

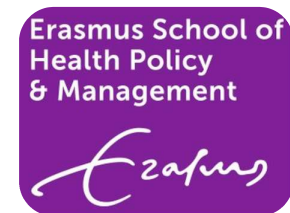


#EHMA2020



#EHMA2020





braam@eshpm.eur.nl

#EHMA2020